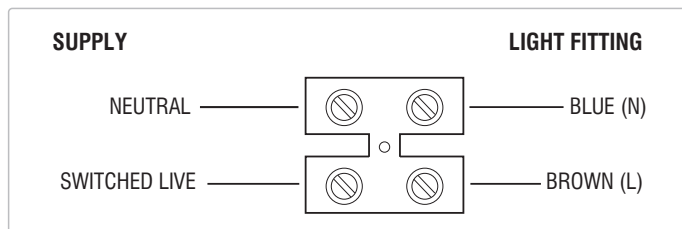


Wiring

Having correctly identified the wiring from your existing light fitting, pull the mains wire through the hole and connect to the terminal block (supplied) in the following way:



Check that...

- You have correctly identified the wires.
- The connections are tight.
- No loose strands have been left out of the terminal block.

Technical data

Supply Voltage: 220-240 V~, 50 Hz

Bulb Type: 1.6W LED module (SMD), 3000K

This product contains a light source of energy efficiency class **G**.



Replaceable (LED only) light source by a professional



Replaceable control gear by a professional



Conformity with all relevant UKCA Directive requirements.

Conformity with all relevant EC Directive requirements.



The power supply is Double Insulated and does not require connection to an Earth circuit.



Waste electrical products should not be disposed of with household waste. Please recycle where facilities exist. Check with your Local Authority or local store for recycling advice.



This product is not suitable for dimming.

Care and Safety

Allow 10 minutes to cool before replacing, adjusting or cleaning.

We recommend cleaning with a soft dry cloth. Do not use solvents or abrasive cleaners as these could damage the finish.

For your safety, always switch off the power supply before cleaning.

For further information, please visit <https://www.lighting-info.co.uk/92312>

V2 07/04/2022

UK Manufacturer: BH17 7BY

EU Manufacturer: Brilliant AG,

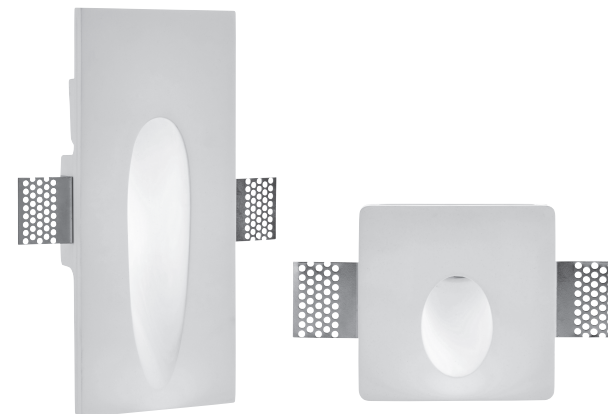
Brilliantstrasse 1, D-27442 Gnarrenburg

saxby
lighting

Instruction manual

Zeke Recessed Light

92312, 92313




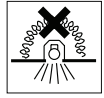
www.saxbylighting.com

saxby
lighting

Thank you for purchasing this light fitting. Please read the instructions carefully before use to ensure safe and satisfactory operation of this product. Please retain these instructions for future reference.

Warning

 This light fitting is double insulated and does not require connection to an Earth circuit.



Luminaires not suitable for covering with thermally insulating material.

Please read these instructions carefully before commencing any work.

This unit must be fitted by a competent and qualified electrician.

Install in accordance with the IEE Wiring regulations and current Building Regulations.

Check the pack and make sure you have all the parts listed.

To prevent electrocution switch off at the mains supply before installing or maintaining this fitting. Ensure other persons cannot restore the electrical supply without your knowledge.

If replacing an existing fitting, make a careful note of the connections.

If you are in any doubt about your competence please consult a qualified electrician.

Waste electrical products should not be disposed of with household waste. Please recycle where facilities exist. Check with your local authority or retailer for recycling advice.

Layout

Plan the desired layout of these fittings carefully, ensuring the cables will reach the distances between each light fitting.

Avoid locating any cables in positions that would cause a hazard. Position cables away from areas where they may be at risk from being cut, trapped or damaged.

The mains supply cable must have a minimum cross section area of 1.0mm².

It is for indoor use only, and is not suitable for a bathroom location.

This product is designed to be fitted into wall mounted.

Installation

Existing fittings must be completely removed before installation of a new product. Before removing the existing fitting, carefully note the position of each set of wires.

Note that the switch is turned off before installation.

Always disconnect the LED driver from the mains when installing or maintaining these products.

Plan the desired layout of these products carefully, ensuring the cables will reach the distances between the LED driver and the light fitting. The recommended distance is 200mm.

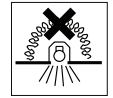
These products must always be fitted to a plasterboard mounting surface. This must not be fitted to a plaster and lath mounting surface.

The mounting surface must be flat and smooth to ensure a good fit.

Ensure that there is adequate ventilation for the LED driver.

The products must be located a minimum distance of 50mm from a joist.

The thickness from the face of the product to the underside of the bracket needs to be the thickness of the plasterboard...either 9.5mm or 12.5mm. Ensure free movement of air by removing void insulation from at least 150mm from around the hole. Under no circumstances must these fittings and LED driver be covered with insulating matting or similar material, as indicated by right symbol:



- Cut a hole using an appropriate tool. The sizes are shown,
For 92312 square: Cut hole Sq: 100mm, Minimum cavity depth: 52mm
For 92313 rectangle: Cut hole: 243mm H x 106mm W, Minimum cavity depth: 55mm
Although it is recommended to cut the hole slightly smaller than needed. then file the hole until the recessed unit fits snugly.
- Follow the installation steps below to install.
- Fix the product into position.
- Replace fuse or circuit breaker and switch on, then test.
- Place the fitting into the recessed hole and secure in place with the supplied screws. Fit them through the wall and the holes in the fixing bracket.
- Once fitted and tested, the wall void around the fitting can be plastered and painted so only the light is visible and the outer frame is obscured.

