

OrionRGBW LED Touch Faceplate

91043

Matching code operation

If unique-control or new-coded-remote is needed, pairing the remote and the receiver as below operation instruction before using:

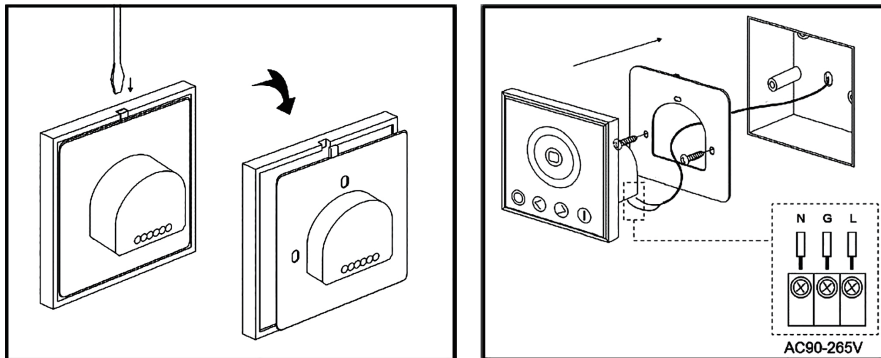
- Step 1:** Pressing key **"mode"** and hold on, power on the controller, the load LEDs will be 50% brightness white as responding.
- Step 2:** Continuously to press the key **"C/W"** for 3 times within 5 seconds after step 1, the brightness of LEDs will change from 25% -10% as responding.
- Code learning successfully, the LEDs will be back to the status before the power off, and the receiver only can be controlled by the remote
- If not, please re-operate from step 1 to 2.

Clear code operation

Back to factory default, receiver can be controlled by any of the same remote controls.

- Pressing key **"mode"** and hold on, power on the controller, the load LEDs will be 50% brightness white as responding.
- Pressing **"Speed/Brightness -"** 3 times in 5 seconds, corresponding to the operation, the LED's brightness will change as 25%-10%-back to preset level.
- Code clearing successfully, the LEDs will be back to the status before the power off, and the receiver can be controlled by any remote control (any of the same remote control can be used to clear the code).
- If not, please re-operate from step 1 to 2.

Wall-panel Installation



Care and Safety

We recommend cleaning with a soft dry cloth. Do not use solvents or abrasive cleaners as these could damage the finish. For your safety, always switch off the power supply before cleaning.

Thank you for purchasing this accessory. Please read the instructions carefully before use to ensure safe and satisfactory operation of this product. Please retain these instructions for future reference.

Warning

This is a Class 1 product and must be earthed.

Please read these instructions carefully before commencing any work

Install in accordance with the IEE Wiring regulations and current Building Regulations.

To prevent electrocution switch off at the mains supply before installing or maintaining this fitting. Ensure other persons cannot restore the electrical supply without your knowledge. If you are in any doubt, please consult a qualified electrician.

This accessory is suitable for indoor use only.

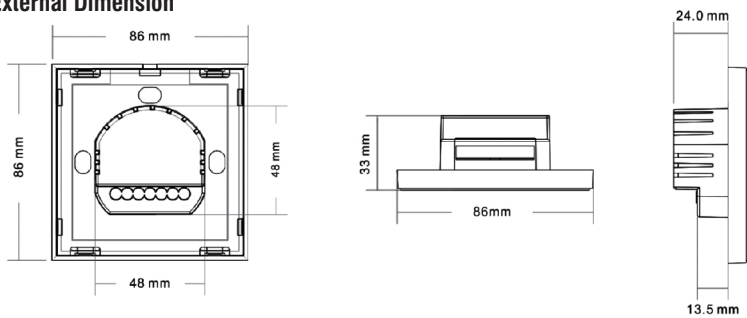
If replacing an existing fitting, make a careful note of the connections.

Waste electrical products should not be disposed of with household waste. Please recycle where facilities exist. Check with your local authority or retailer for recycling advice.

Remote Control

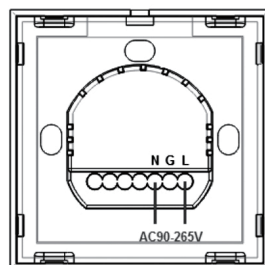
| | | | |
|---------------------|---------------------------|-----------------|--------------------|
| Ambient temperature | 0-45°C | Working voltage | AC90-265V(50/60Hz) |
| Standby power | 0.2W | Working power | 2W |
| Net weight | 130g | RF frequency | 433.92MHz |
| Dimension | 86*86*34mm | RF distance | ≤ 20m |
| Structure | 86-type European standard | | |

External Dimension



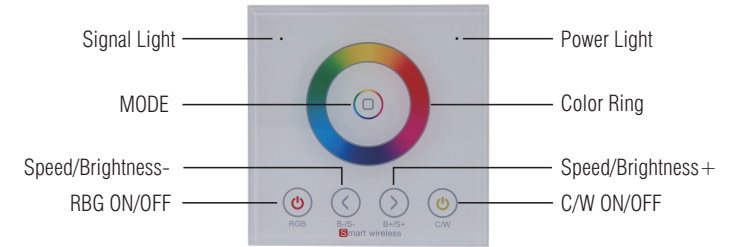
Interface Specifications

Full-touch wall panel remote interface



Direction for use

The function of buttons are shown as below:



The function of each button as below:

| Name of key | Instruction | Remarks |
|--------------------|--|---|
| RGB ON/OFF | RGB: ON or OFF in anytime | |
| C/W ON/OFF | White: ON or OFF in anytime | |
| Mode | The mode will move to next, when touch the key each time | 10 modes in total. |
| Speed/Brightness + | The Speed/Brightness will +1, when touch the key each time | Speed for dynamic modes, Brightness for static modes. Long-press can get fast adjusting |
| Speed/Brightness - | The Speed/Brightness will -1, when touch the key each time | Speed for dynamic modes, Brightness for static modes. Long-press can get fast adjusting |
| Color Ring | Touch any color which is wanted | |

10 modes in total as below:

| No | Patterns | Remarks |
|----|-------------------------------|---|
| 1 | Static white | Brightness is adjustable |
| 2 | White flash | |
| 3 | White breath | |
| 4 | Three-color jump changing | |
| 5 | Seven-color jump changing | |
| 6 | Three-color gradient changing | Speed is adjustable, brightness is unadjustable |
| 7 | Seven-color gradient changing | |
| 8 | R/G cross fade | |
| 9 | R/B cross fade | |
| 10 | G/B cross fade | |

Tips: Receiver can be controlled by any of the remote controls as factory default; the wall-panel remote control delivered with unique RF code as factory default; if unique-control is needed, please matching the code before installation and using.