

Matching code operation

If unique-control or new-coded-remote is needed, pairing the remote and the receiver as below operation instruction before using:

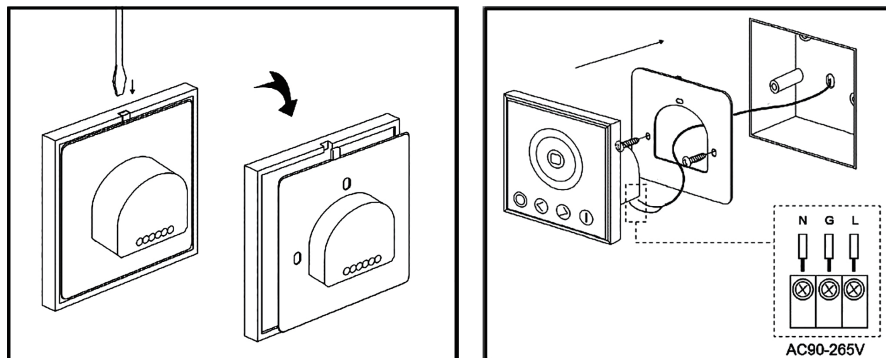
1. **Step 1:** Pressing key “**mode**” and hold on, power on the controller, the load LEDs will be 50% brightness white as responding.
- Step 2:** Continuously to press the key “**ON**” for 3 times within 5 seconds , corresponding to the operation, the LED's brightness will change as 25%-10%-back to preset level.
2. Code learning successfully, the LEDs will be back to the status before the power off, and the receiver only can be controlled by the remote.
3. If not, please re-operate from step 1 to 2.

Clear code operation

Back to factory default, receiver can be controlled by any any of the same remote controls

1. Pressing key “**mode**” and hold on, power on the controller, the load LEDs will be 50% brightness white as responding.
2. Pressing “**Speed/Brightness -**” 3 times in 5 seconds, corresponding to the operation, the LED's brightness will change as 25%-10%-back to preset level.
3. Code clearing successfully, the LEDs will be back to the status before the power off, and the receiver can be controlled by any remote control (any of the same remote controls can be used to clear the code).
4. If not, please re-operate from step 1 to 2.

Wall-panel Installation



Care and Safety

We recommend cleaning with a soft dry cloth. Do not use solvents or abrasive cleaners as these could damage the finish. For your safety, always switch off the power supply before cleaning.

OrionRGB LED Touch Faceplate

91041



Thank you for purchasing this accessory. Please read the instructions carefully before use to ensure safe and satisfactory operation of this product. Please retain these instructions for future reference.

Warning

This is a Class 1 product and must be earthed.

Please read these instructions carefully before commencing any work

Install in accordance with the IEE Wiring regulations and current Building Regulations.

To prevent electrocution switch off at the mains supply before installing or maintaining this fitting. Ensure other persons cannot restore the electrical supply without your knowledge. If you are in any doubt, please consult a qualified electrician.

This accessory is suitable for indoor use only.

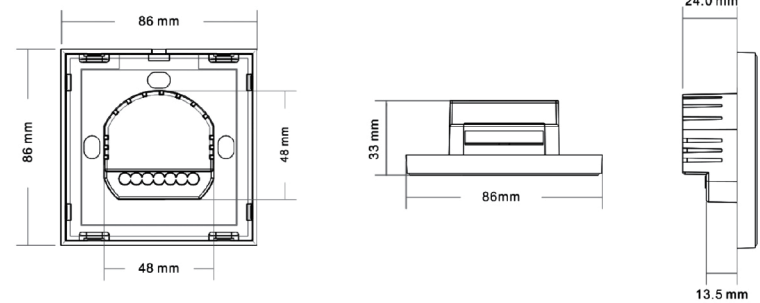
If replacing an existing fitting, make a careful note of the connections.

Waste electrical products should not be disposed of with household waste. Please recycle where facilities exist. Check with your local authority or retailer for recycling advice.

Remote Control

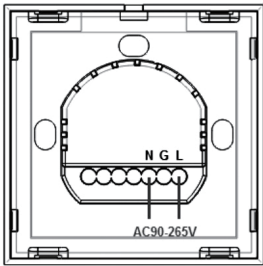
Ambient temperature	0-45°C	Working voltage	AC90-265V(50/60Hz)
Standby power	0.2W	Working power	2W
Net weight	130g	RF frequency	433.92MHz
Dimension	86*86*34mm	RF distance	≤ 20m
Structure	86-type European standard		

External Dimension



Interface Specifications

Full-touch wall panel remote interface



Direction for use

The function of buttons are shown as below:



The function of each button as below:

Name of key	Instruction	Remarks
ON/OFF	ON or OFF in any time	
Mode	The mode will move to next, when touch the key each time	10 modes in total.
Speed/Brightness +	The Speed/Brightness will +1, when touch the key each time	Speed for dynamic modes, Brightness for static modes. Long-press can get fast adjusting
Speed/Brightness -	The Speed/Brightness will -1, when touch the key each time	Speed for dynamic modes, Brightness for static modes. Long-press can get fast adjusting
Color Ring	Touch any color which is wanted	

10 modes in total as below:

No	Patterns	Remarks
1	Static white	Brightness is adjustable
2	White flash	Speed is adjustable, brightness is unadjustable
3	White breath	
4	Three-color jump changing	
5	Seven-color jump changing	
6	Three-color gradient changing	
7	Seven-color gradient changing	
8	R/G cross fade	
9	R/B cross fade	
10	G/B cross fade	

Tips: Receiver can be controlled by any of the same remote controls as factory default; the wall-panel remote control delivered with unique RF code as factory default; if unique-control is needed, please matching the code before installation and using.