

Shaver Socket Instructions

- The shaver socket is powered by a 15W isolating transformer and is only intensified for use with electric shavers, electric toothbrush chargers and similar products.
- Any appliance connected to the socket must not exceed the 15W power output as this could cause damage and overheating to occur.
- Always check your appliance instructions to ensure the power requirements are less than 15W.

Demister Operation

- Heated pad is on when the mirror is illuminated. The demist pad will warm the mirror surface.
- The demisting effect will spread approximately 10-20% further than the pad itself.

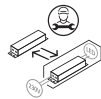
Technical Data

Supply Voltage: 220-240 V~, 50 Hz | Shaver Socket: 115V - 240V dual socket

Bulb Type: 16W LED (SMD) CCT, 3000~6500K tuneable | This product contains a light source of energy efficiency class **E**.



Replaceable (LED only) light source by a professional



Replaceable control gear by a professional



Conformity with all relevant UKCA Directive requirements.



Conformity with all relevant EC Directive requirements.



This product is Class 1, must be connected to earth.



Waste electrical products should not be disposed of with household waste. Please recycle where facilities exist. Check with your Local Authority or local store for recycling advice.



This product is not suitable for dimming.



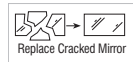
This product is rated at IP44.

Care and Safety

We recommend cleaning with a soft dry cloth. Do not use solvents or abrasive cleaners as these could damage the finish.

Mirror-Use a damp cloth or a propriety glass cleaner. Do not use abrasive materials as these will damage the finish.

Live Voltages may be present in this unit even when turned off or when completely disconnected. For your safety, always switch off the power supply before changing lightbulbs, or cleaning.



The mirror must be replaced immediately should it become cracked or damaged. This fitting must not be used without the mirror in place.

For further information, please visit <https://www.lighting-info.co.uk/60895>

V6 20/09/2024

UK Manufacturer: BH17 7BY

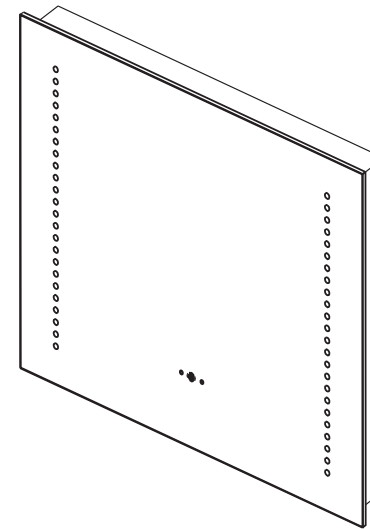
EU Manufacturer: Brilliant AG,
Brilliantstrasse 1, D-27442 Gnarrenburg

saxby
lighting

Instruction manual

Rift CCT Shaver Mirror

60895



www.saxbylighting.com

saxby
lighting

Thank you for purchasing this light fitting. Please read the instructions carefully before use to ensure safe and satisfactory operation of this product. Please retain these instructions for future reference.

Warning

This is a Class 1 product and must be earthed.

Please read these instructions carefully before commencing any work.

This unit must be fitted by a competent and qualified electrician.

Check the pack and make sure you have all the parts listed.

Install in accordance with the IEE Wiring regulations and current Building Regulations.

To prevent electrocution switch off at mains supply before installing or maintaining this fitting. Ensure other persons cannot restore the electrical supply without your knowledge. If you are in any doubt, please consult a qualified electrician.

This light fitting should be connected to a fused circuit.

If replacing an existing fitting, make a careful note of the connections.

This product is suitable for indoor use only, on normal flammable surfaces.

Waste electrical products should not be disposed of with household waste. Please recycle where facilities exist. Check with your local authority or retailer for recycling advice.

Layout

Plan the desired layout of these fittings carefully, ensuring the cables will reach the distance between the Junction box and the light fitting.

Avoid locating any cables in positions that would cause a hazard. Position cables and junction boxes (not supplied) away from areas where they may be at risk from being cut, trapped or damaged.

The mains supply cable must have a minimum cross sectional area of 1.0mm².

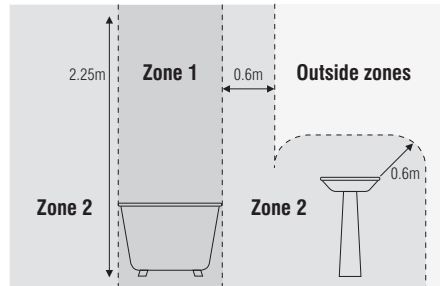
Cables in wall must be protected using suitable conduit or plastic trunking.

This product has special protection against the ingress of moisture.

This product is fitted with a no touch infrared switch, helping to keep the mirror clear of fingerprints. **Caution: To avoid interference, the sensor must be placed a minimum of 200mm away from any surface of object.**

This product is suitable for use bathroom zone 2 and outside zones of a bathroom only. Please see diagram on the right.

If this unit is being fitted in zone 1 a room containing a bath or shower, a 30mA RCD must be used - in accordance with IEE regulations.



Installation

Existing fittings must be completely removed before installation of a new product. Before removing the existing fitting, carefully note the position of each set of wires.

Note that the switch is turned off before installation.

This product is suitable for installation on surfaces with normal flammability e.g. wood, plasterboard and masonry. It is not suitable for use on highly flammable surfaces (e.g. polystyrene, textiles).

If mounting, note the position of the "This Way Up" label on the back of the product and ensure it is correctly oriented.

An assistant may be required to aid installation of this product.

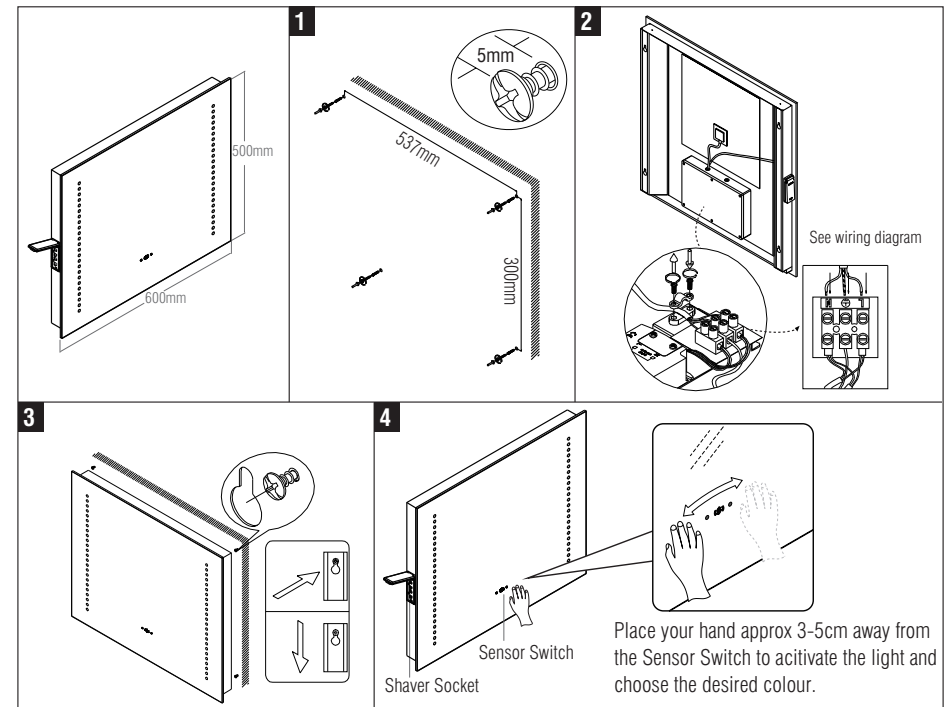
- Using the hole spacing dimensions detailed below, mark and drill the fixing holes. Take care to avoid damaging any concealed wiring or pipes. Fit the wall plugs and supplied screws. Ensure the screw heads protrude from the wall around 5mm. Ensure the screw holes are accurately located in the wall, as the mirror will hang from the screws.
- Wire as detailed wiring diagram.
- Attach the mirror to the wall by locating over the screw heads. Ensure the screw heads are fully engaged into the hanging slots.
- Replace fuse or circuit breaker and switch on. Your light is now ready for use.
- Activate your new LED mirror by swiping your hand in front of the sensor switch.

To switch on/off

1. Wave hand past the sensor switch located on the mirror face.
2. Heated pad is on when the mirror is illuminated.

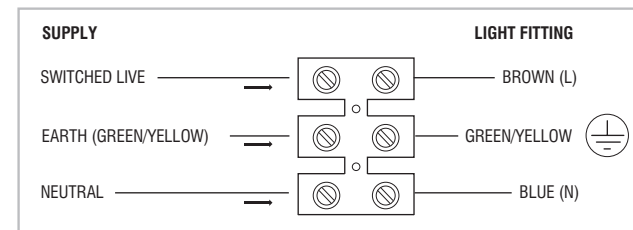
To change the colour temperature(3000K~6500K tuneable)

1. Hold hand in front of the sensor switch until desired colour is obtained. It takes about 5S to change from 3000K to 6500K.
2. This LED mirror light has a memory function. It will remember the last color temperature is then set until changed again.



Wiring

Having correctly identified the wiring from your light fitting, Pull the wire through the hole and connect to the connection block inside the product in the following way:



Check that...

- You have correctly identified the wires.
- The connections are tight.
- No loose strands have been left out of the connection block.