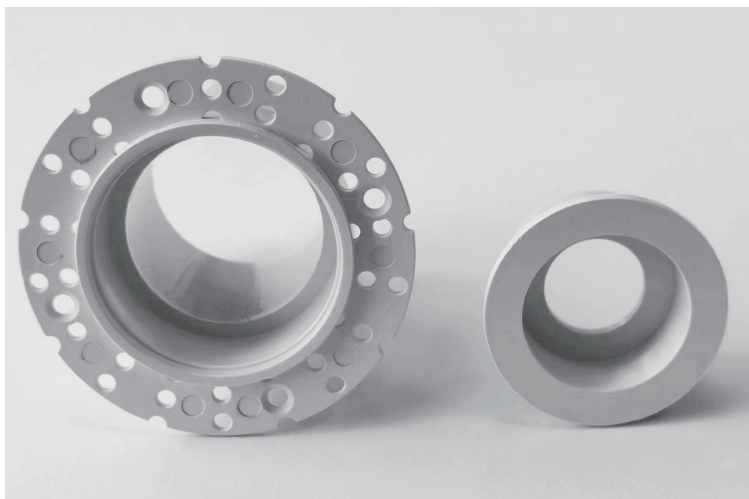


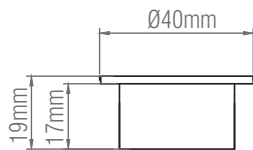
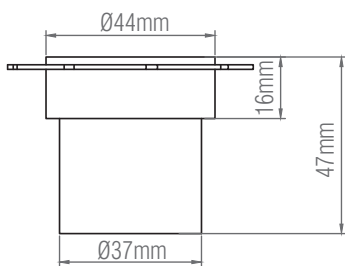
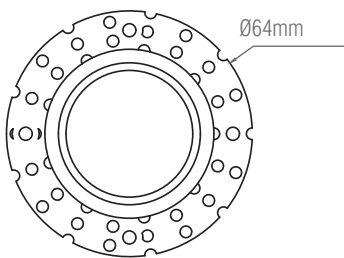
Hades Trimless Accessory

114598



Thank you for purchasing this product. Please read the instructions carefully before use to ensure safe and satisfactory operation of this product. Please retain these instructions for future reference.

This product is designed for 91954, 91955 Hades for plaster-in mounted.



Warning

Please read these instructions carefully before commencing any work.

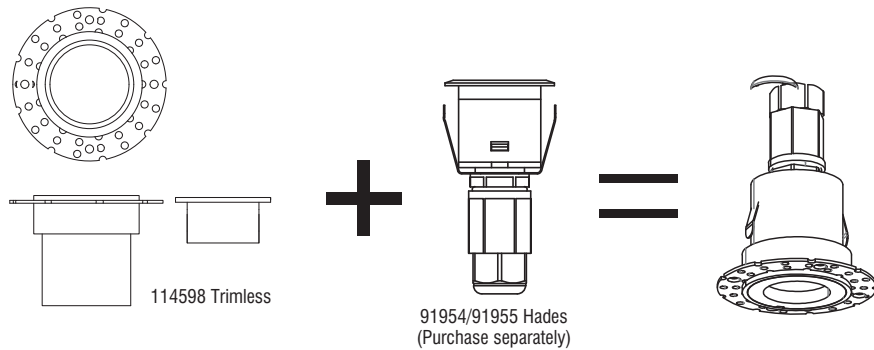
This unit must be fitted by a competent and qualified electrician. Install in accordance with the IEE Wiring regulations and current Building Regulations.

Check the pack and make sure you have all the parts listed.

To prevent electrocution switch off at the mains supply before installing or maintaining this fitting. Ensure other persons cannot restore the electrical supply without your knowledge. If you are in any doubt, please consult a qualified electrician.

If replacing an existing fitting, make a careful note of the connections.

Waste electrical products should not be disposed of with household waste. Please recycle where facilities exist. Check with your local authority or retailer for recycling advice.



Installation

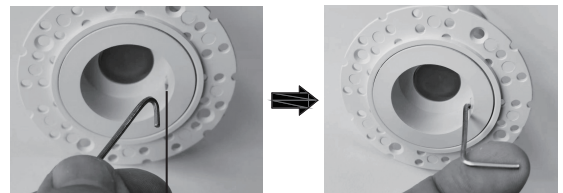
- Use the front cover of 114598 to replace the existing front cover of the 91954 or 91955 Hades.
- Cut an Ø46mm x Min. Dept 110mm hole in which the Trimless will be fitted.
- Place the trimless into the hole, ensuring the appropriate supply wiring is accessible. Secure trimless bezel into place with appropriate fixings. Ensure stainless steel screws are used to avoid rust.
- Plaster over the trimless bezel.
- Complete the plastering. Then remove the black insert.
- Get the 91954 or 91955 Hades LED light to wire. (For more details, please refer to the Hades instruction manual)
- Push the Hades LED light into the trimless until the product is secured.
- Switch on. Your light is now ready for use.

<p>01 Remove the existing front cover</p> <p>Replace 114598 front cover</p>	<p>02</p> <p>Cut hole: Ø46mm Min. Dept: 110mm</p>	<p>03</p>
<p>04</p>	<p>05</p> <p>keep the black insert during plastering</p>	<p>06</p> <p>See wiring diagram in the Hades installation manual</p>
<p>07</p>	<p>08</p> <p>ON</p> <div style="display: flex; justify-content: space-around;"> <div data-bbox="917 1315 1061 1401"> <p>Product is not suitable for direct mounting on normally flammable surfaces (suitable only for mounting on non-combustible surfaces)</p> </div> <div data-bbox="917 1433 1061 1563"> <p>Luminaires not suitable for covering with thermally insulating material.</p> </div> </div>	

Replacing LED Module

Note that the switch is turned off before replacing.

- Before replacement, ensure that the switch is turned off. Use the L-shaped tool (supplied) to pull out and remove the LED module.
- Loosen the wires.
- To get a new LED module, refer to the wiring diagram and instructions in the main installation manual.



Safety Information

For your safety, always switch off the power supply before maintaining or cleaning.

NOTE: When wall mounted, for good visual effects the hole should sit at the top so it is invisible.