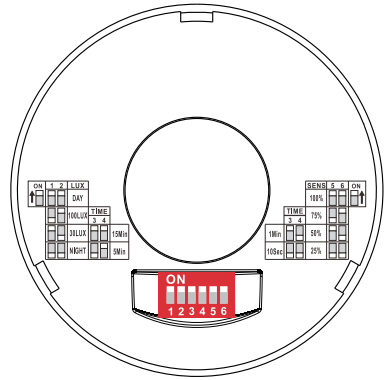


## Setting



### 1 Daylight Sensor



	1	2	range	Ambient Light
I	OFF	OFF	<10Lux	very dark
II	ON	OFF	<30Lux	dark
III	OFF	ON	<100Lux	slight light
IV	ON	ON	DAY	whole day

### 2 Hold Time



	3	4	Delay Time
I	ON	ON	15Min
II	OFF	ON	5Min
III	ON	OFF	1Min
IV	OFF	OFF	10sec

### 3 Detection Area



	5	6	Sensitivity	Detect Breathe
I	ON	ON	100%	25m <sup>2</sup> (5*5m room)
II	OFF	ON	75%	16m <sup>2</sup> (4*4m room)
III	ON	OFF	50%	4m <sup>2</sup> (2*2m room)
IV	OFF	OFF	25%	1m <sup>2</sup> (1*1m room)

## Technical data

Supply Voltage: 220-240V~

Power Frequency: 50Hz

Ambient Light: 10LUX / 30LUX / 100LUX / DAY 24H (Adjustable)

Time Delay: 10sec / 1min / 5min / 15min

Rated Load: Max. 800W 400W

Detection Range: 360° Ceiling / 180° Wall

Detection Distance: Max 3m (radius) movement signal such as hand moving, shake head.  
2-3m (radius) breathe signal.

Working Temperature: -20~+40°C

Working Humidity: <93%RH

Power Consumption: approx 0.9W

Installation Height: 2.2-4m



Conformity with all relevant UKCA Directive requirements.



Conformity with all relevant CE Directive requirements.



The power supply is Double Insulated and does not require connection to an Earth circuit.



Waste electrical products should not be disposed of with household waste. Please recycle where facilities exist. Check with your Local Authority or local store for recycling advice.



This product is for indoor use only.

## Care and Safety

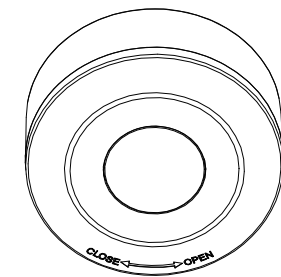
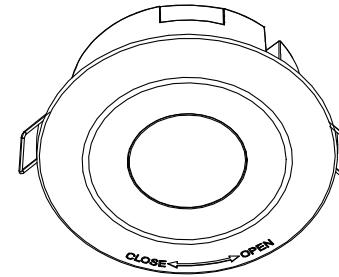
We recommend cleaning with a soft dry cloth. Do not use solvents or abrasive cleaners as these could damage the finish.

For your safety, always switch off the power supply before changing lightbulbs, or cleaning.

Instruction manual

# Presence Sensor 2-in-1

112540



V1 02/08/2024

UK Manufacturer: BH17 7BY

EU Manufacturer: Brilliant AG,  
Brilliantstrasse 1, D-27442 Gnarrenburg


saxby  
lighting

www.saxbylighting.com

saxby  
lighting

Thank you for purchasing this light fitting. Please read the instructions carefully before use to ensure safe and satisfactory operation of this product. Please retain these instructions for future reference.

## Warning

 This product is double insulated and does not require connection to an Earth circuit.

Please read these instructions carefully before commencing any work.

This unit must be fitted by a competent and qualified electrician.

Install in accordance with the IEE Wiring regulations and current Building Regulations.

Check the pack and make sure you have all the parts listed.

To prevent electrocution switch off at the mains supply before installing or maintaining this fitting. Ensure other persons cannot restore the electrical supply without your knowledge.

If you are in any doubt, please consult a qualified electrician.

If replacing an existing fitting, make a careful note of the connections.

This unit should be connected to a fused circuit.

This unit is only suitable for indoor use.

Waste electrical products should not be disposed of with household waste. Please recycle where facilities exist. Check with your local authority or retailer for recycling advice.

## Layout

This sensor is used 24GHz Millimeter Wave Radar technology, Real Presence Sensor can detect large movement and small movement, such as hand movement, shake head and fluctuate when breathe, there is a relay to control on and off when there is movement.

This sensor is designed for optimum performance when mounted in ceiling 2.2-4m above the ground.

Avoid pointing at or positioning close to heat sources such as flues or heat extraction units, which may cause false triggering.

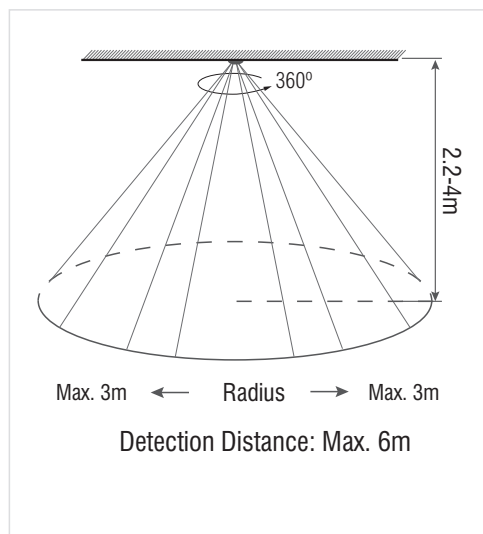
Avoid pointing at bright lights as unit will not function when you set Lux control Level to dark.

Avoid locating near electromagnetic fields.

The mains supply cable must have a minimum cross section area of 1.0mm<sup>2</sup>.

Cables must be protected using suitable conduit or plastic trunking.

**NOTE:** The detection sensitivity is closely related to the height of the person under test, the moving speed, the installation position of the sensor, whether there is a barrier, and the reflection of metal or glass. the above data is the installation height of 3m, the height of the tester is 165cm, the moving speed is 0.3m/s, the human body is facing the sensor installation point, and the measurement is for reference only. Select the sensitivity based on the onsite installation environment.

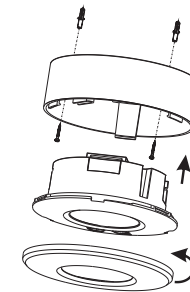


## Installation

Existing fittings must be completely removed before installation of a new product. Before removing the existing fitting, carefully note the position of each set of wires.

Note that the switch is turned off before installation.

After deciding the layout of the light fittings ensure that the cables are long enough to connect to desired positions.

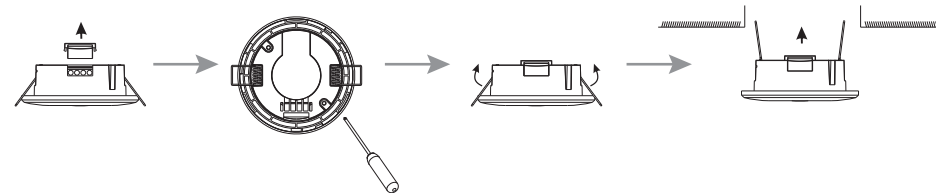


### Installation Surface:

- Please remove the metal spring of the sensor.
- Connect the power and the load according to the connection-wire diagram.
- Fix the bottom on the selected position with the inflated screw.
- Install back the upper cover on the sensor, then you could switch on the power and test it.
- Wire as detailed Wiring diagram.

### Installation Recessed:

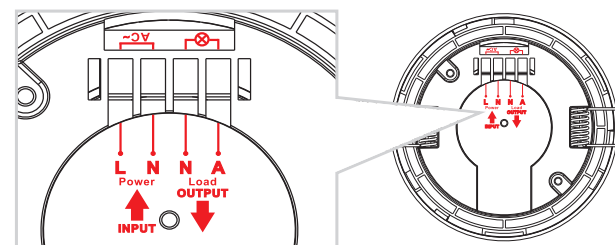
- Unload the transparent vinyl cover which is at the bottom of the sensor.
- Loose the screws in the connection terminal, and then connect the power to connection terminal of sensor according to connection-wire diagram.
- Fold the metal spring of the sensor upwards, until they are in "I" position with sensor, and then put the sensor into the hole (Cut out: Ø75mm, Mini. cavity depth: 30mm) or installation box which is on the ceiling and has the similar size with the sensor. Releasing the spring, the sensor will be set in this installation position.
- After finishing installing, turn on the power and then test it.
- Wire as detailed Wiring diagram.



## Wiring

This product is double insulated and must not be earthed. If there are any incoming earth cables, they must be joined together. This is to ensure earth continuity throughout your property.

Having correctly identified the wiring from your existing light fitting and connect to the connection block inside the product in the following way:



### Check that...

- You have correctly identified the wires
- The connections are tight
- No loose strands have been left out of the connection block
- The cable clamp is fitted over the wires.